



Hammer Grab

Bored Pile Equipment | 대구경장비

Hammer Grab

Special features

SAMBO CMC's Hammer Grab is a large bored pile equipment for the foundation and excavating round section shape. Construction reacting to deep depth and excavation of gravel layer/soft rock later is possible. Especially, Hammer grab is universally used for the foundation works which occur large load and moment. (e.g. road bridges, railroad bridges, building foundation, and harbor facilities.)

- The pulleys are equipped with oil-filled maintenance-free life time bearings.
- The material of edge of jaws is HARDOX400.

SAMBO CMC'S X-link type hammer grab is the newest innovative design and most creative invention in the world. This patented newest version of X-link type hammer grab requires no wire rope and no pulley. Its most creative design will bring you a stunning pleasure.

특징

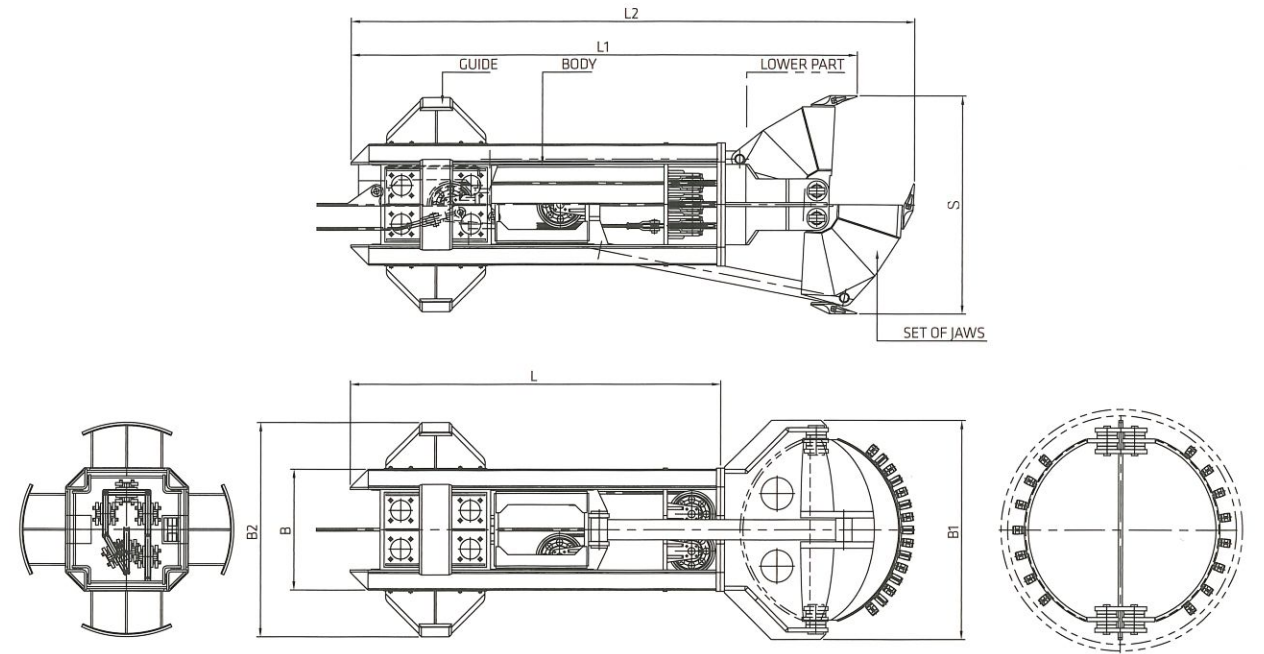
지하 대규모 장비로써 단면형상이 원형으로 시공가능하다. 깊은 심도까지 시공이 가능하고 자갈층 및 암반층의 굴착도 가능하다. 특히, 도로교량, 철도교량, 건물기초, 항만시설 등 큰 하중이나 Moment가 발생하는 기초에 널리 사용된다.

- 오일 주유 타입 활차 사용으로 베어링의 긴 수명을 보장 함.
- Bucket삼날에 HARDOX400 사용.

특히, X-링크 타입의 함마그랩은 내부에 와이어 로프 및 풀리가 없는 구조로써 특별한 유지보수가 필요없으며 또한 콤팩트한 그랩설계와 특수 강성재료를 사용하여 뛰어난 내구성을 갖습니다.



Spherical type



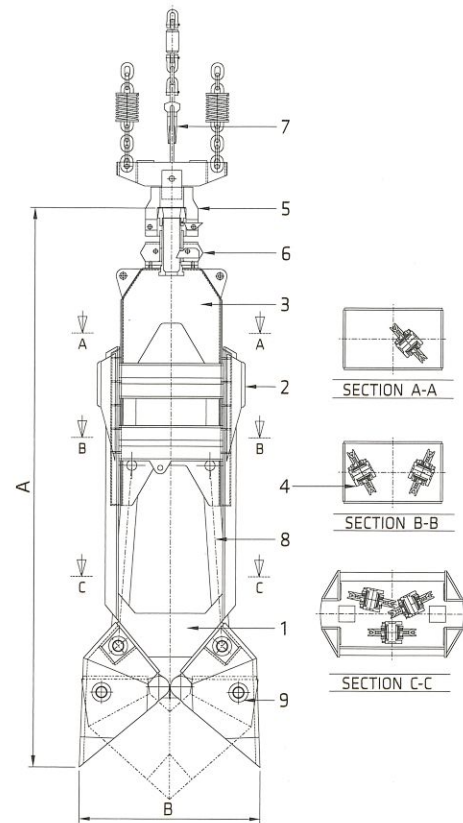
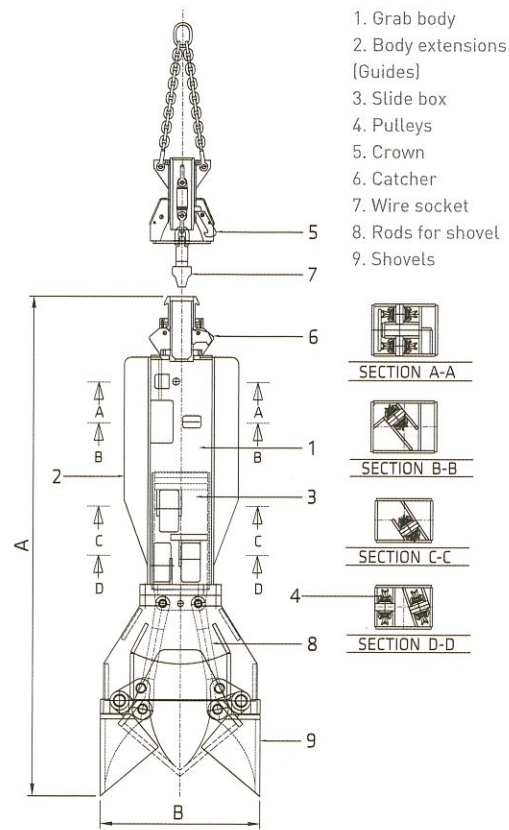
Specifications

Model	Casing Diameter (mm)	L (mm)	L1 (mm)	L2 (mm)	B (mm)	B1 (mm)	B2 (mm)	S (mm)	Weight (ton)	Capacity (Liter)
SLKG-200	2,000 / 1,880	4,600	5,700	6,100	1,500	1,770	1,650	1,810	15	970
SLKG-250	2,500 / 2,380	4,600	6,000	6,615	1,500	2,290	2,200	2,310	20	2,250
SLKG-300	3,000 / 2,840	4,600	6,215	7,000	1,500	2,760	2,660	2,710	22	3,900

The above may change during further development. (상기 사양은 보다 나은 개발을 위해 변경될 수 있음.)

Standard type

Heavy duty type



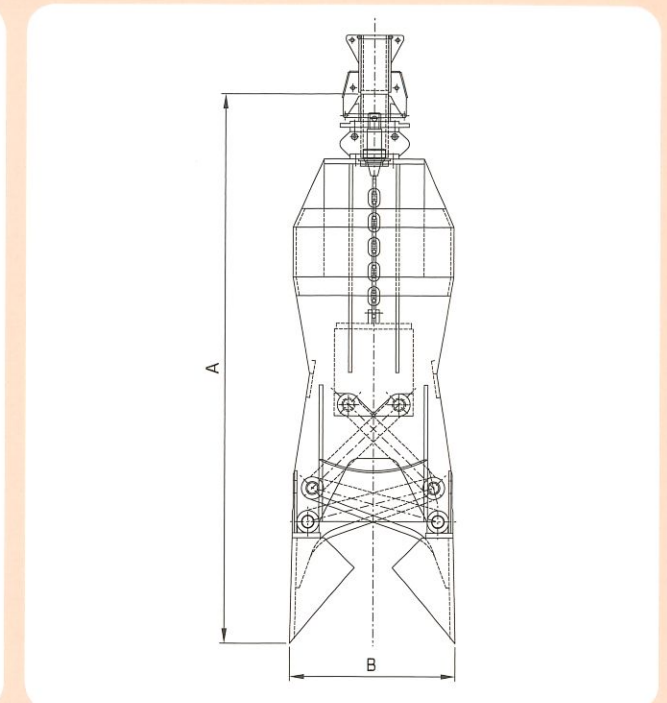
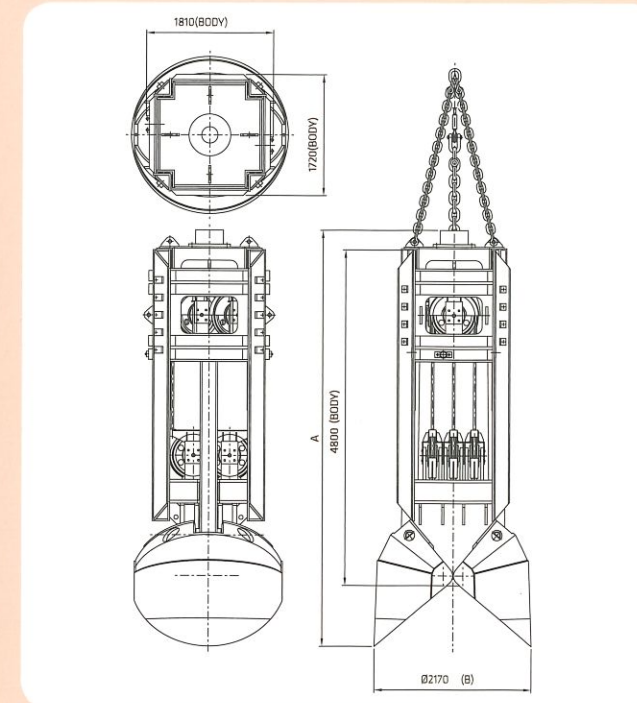
Specifications

Model	Casing Diameter (mm)	Excavation Diameter B (mm)	Length of Machine A (mm)	Jaw Capacity (Liter)	Weight of Machine (ton)	Remarks
SMG10ST	1,000 / 920	D890	3,750	210	2.5	Standard type
SMG12ST	1,200 / 1,120	D1,070	3,980	430	3.5	Standard type
SMG15ST	1,500 / 1,400	D1,360	4,250	850	4.5	Standard type
SMG18HD	1,800 / 1,700	D1,650	5,630	1,100	9.0	Heavy duty type
SMG20HD	2,000 / 1,880	D1,800	5,680	1,200	9.6	Heavy duty type
SMG25HD	2,500 / 2,380	D2,250	5,880	1,800	10.5	Heavy duty type

The above may change during further development. (상기 사양은 보다 나은 개발을 위해 변경될 수 있음.)

HGHD type

X-link type



HGHD type Specifications / X-link type Specifications

Model	Casing Diameter (mm)	Excavation Diameter B (mm)	Length of Machine A (mm)	Jaw Capacity (Liter)	Weight of Machine (ton)	Remarks
SMG25HGHD	2,500/2,400	D2,170	6,040	2,500	17	
SMG28HGHD	2,800/2,680	D2,370	6,125	3,500	18	
SMG30HGHD	3,000/2,840	D2,570	6,210	4,500	19	
SMG10XLT	1,000/920	D850	4,230	350	3.5	
SMG12XLT	1,200/1,120	D1,050	4,380	520	4.5	
SMG15XLT	1,500/1,400	D1,350	4,423	905	6.8	
SMG18XLT	1,800/1,700	D1,640	4,973	1,650	7.9	
SMG20XLT	2,000/1,880	D1,850	5,453	2,100	9.6	
SMG25XLT	2,500/2,380	D2,300	5,738	4,200	12.3	
SMG30XLT	3,000/2,840	D2,800	6,898	8,000	14	

The above may change during further development. (상기 사양은 보다 나은 개발을 위해 변경될 수 있음.)